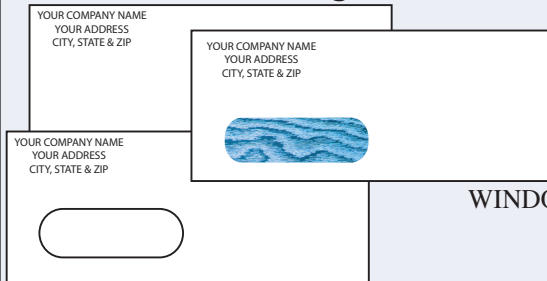


# Popular Business Envelopes

## STANDARD SIZE BUSINESS ENVELOPES

### Sub 24 White - Regular Gum



Size	*500	1,000	2,500
<i>PRICES PER 1,000 PRINTED BLACK INK OR REFLEX BLUE INK *per lot</i>			
10 Regular	\$36	\$54	\$41
10 Window	\$38	\$59	\$45
9 Regular	\$36	\$54	\$41
9 Window	\$38	\$58	\$45
6-3/4 Regular	\$40	\$61	\$45
6-3/4 Window	\$43	\$65	\$49

WINDOW SIZE: 1-1/8 X 4 - 1/2

WINDOW POSITION: 7/8 LEFT - 1/2 BOTTOM

SIZE 6-3/4 (3-5/8 X 6-1/2)

SIZE 9 (3-7/8 X 8-7/8)

SIZE 10 (4-1/8 X 9-1/2)

#### Our Standard Ink for Tint is Blue



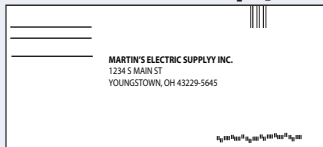
OTHER SIZES AVAILABLE - SAMPLES ON REQUEST

## SELF ADDRESSED - BUSINESS REPLY

### Sub 24 White - Regular Gum



#### Business Reply



#### Self Addressed

Size	*500	1,000	2,500
<i>PRICES PER 1,000 PRINTED BLACK INK OR REFLEX BLUE INK *per lot</i>			
6-1/4 (3-1/2 X 6)	\$48	\$69	\$50
6-3/4 (3-5/8 X 6 1/2)	\$48	\$68	\$49
9 (3-7/8 X 8-7/8)	\$43	\$62	\$45

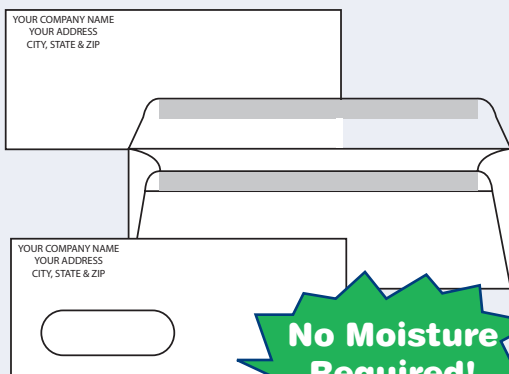
Business Reply envelopes require a postal permit an Intelligent Mail Barcode.

Obtain permit number & IMB at your post office.

## FLIP & SEAL - Touch-of-a Finger Sealing

### # 10 Regular • #10 Window (4-1/8 x 9-1/2)

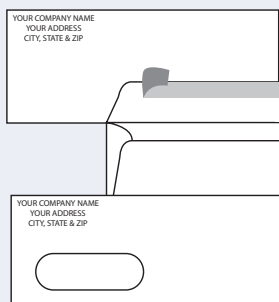
### Sub 24 White - Flip & Seal



Prod. #	Size	*500	1,000	2,500
<i>PRICES PER 1,000 PRINTED BLACK INK OR REFLEX BLUE INK *per lot</i>				
4210	10 Regular	\$46	\$72	\$59
4230	10 Window	\$49	\$77	\$64

WINDOW SIZE: 1-1/8 X 4 - 1/2

WINDOW POSITION: 7/8 LEFT - 1/2 BOTTOM



## Long Shelf Life - Preferred By Small Businesses

#10 Regular • # 10 Window  
(4-1/8 x 9-1/2)

Sub 24 White- Peel & Stick

**No Moisture  
Required!**

WINDOW SIZE: 1-1/8 X 4 - 1/2

WINDOW POSITION: 7/8 LEFT - 1/2 BOTTOM

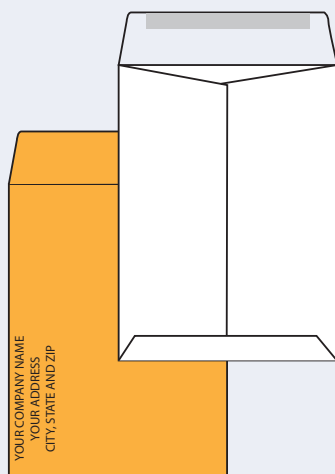
Prod #	Size	*500	1,000	2,500
<i>PRICES PER 1,000 PRINTED BLACK INK OR REFLEX BLUE INK *per lot</i>				
1010PS	10 Regular	\$61	\$89	\$72
1030PS	10 Window	\$64	\$93	\$76

## REGULAR GUM OPEN END ENVELOPES

**Sturdy and Rugged**

**Mail or File Large Papers**

28lb. Brown Kraft • 28lb. White Wove



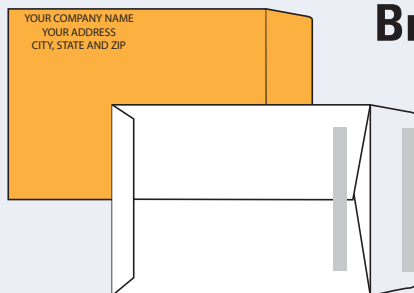
Product #	Description	*500	1,000
<i>PRICES PER 1,000 PRINTED BLACK INK OR REFLEX BLUE INK *per lot</i>			
50116	6 x 9 Brown Kraft	\$84	\$107
51116	6 x 9 White Wove	\$81	\$100
50127	9 x 12 Brown Kraft	\$91	\$114
51127	9 x 12 White Wove	\$94	\$120
50135	10 x 13 Brown Kraft	\$105	\$143
51135	10 x 13 White Wove	\$103	\$137

SEND US YOUR COPY FOR QUOTATION ON LARGER QUANTITIES

## 28 lb. SELF SEAL ENVELOPES

**Brown Kraft or White Wove**

- Seals More Securely than Regular Gummed Envelopes
- No Moistening Just Fold Flap and Press!



Product #	Description	*500	1,000
<i>PRICES PER 1,000 PRINTED BLACK INK OR REFLEX BLUE INK *per lot</i>			
50616	6 x 9 Brown Kraft	\$110	\$143
51416	6 x 9 White Wove	\$107	\$137
50627	9 x 12 Brown Kraft	\$134	\$161
51427	9 x 12 White Wove	\$137	\$166
50635	10 x 13 Brown Kraft	\$148	\$189
51435	10 x 13 White Wove	\$146	\$184

SEND US YOUR COPY FOR QUOTATION ON LARGER QUANTITIES

# BOOKLET ENVELOPES

Open Side - Side Seams - White Sub 24 - White Sub 28



## PRINTED

REGULAR GUM	PROD #	DESCRIPTION	500	1,000
	PRICES PER 1,000 PRINTED BLACK INK OR REFLEX BLUE INK *per lot			
	65327	9 X 12 - 24 White Wove	\$90	\$113
	65427	9 x 12 - 28 White Wove	\$110	\$139
	65435	10 x 13 - 28 White Wove	\$101	\$130
PEEL & STICK	PROD #	DESCRIPTION	500	1,000
	65527	9 x 12 - 28 White Wove	\$138	\$165
	65535	10 x 13 - 28 White Wove	\$192	\$192

SEND US YOUR COPY FOR QUOTATION ON LARGER QUANTITIES

# REMITTANCE ENVELOPES

All Envelopes are Prices with Flaps Extended

White Sub 24

Prices Include Printing 2 Sides In Black or Reflex Blue Ink, Copy to be Supplied

Prod. #	Size	*500	1,000	2,500
4621	6-1/4 (3-1/2 x 6)	\$72	\$94	\$76
4622	6-3/4 (3-5/8 x 6-1/2)	\$74	\$98	\$78
4629	9 (3-7/8 x 8-7/8)	\$75	\$99	\$80
ADD FOR FOLDING		\$20	\$24	\$20

\*Per Lot

DISTRIBUTE THE ENCLOSED PAYMENT AS FOLLOWS  
DO NOT SEND CURRENCY THROUGH THE MAIL

SAVINGS \$ \_\_\_\_\_  
LOAN \$ \_\_\_\_\_  
DEPOSIT \$ \_\_\_\_\_  
TOTAL \$ \_\_\_\_\_

NAME \_\_\_\_\_  
ADDRESS \_\_\_\_\_

MESSAGES CHANGE OF ADDRESS, REQUEST FOR LOAN PAPERS (ETC.)  
\_\_\_\_\_  
\_\_\_\_\_  
\_\_\_\_\_

CHECK HERE IF YOU NEED MORE ENVELOPES ☐  
SAVE SOME EACH PAYDAY  
IF MAKING A LOAN PAYMENT, ADD A LITTLE FOR SAVINGS

